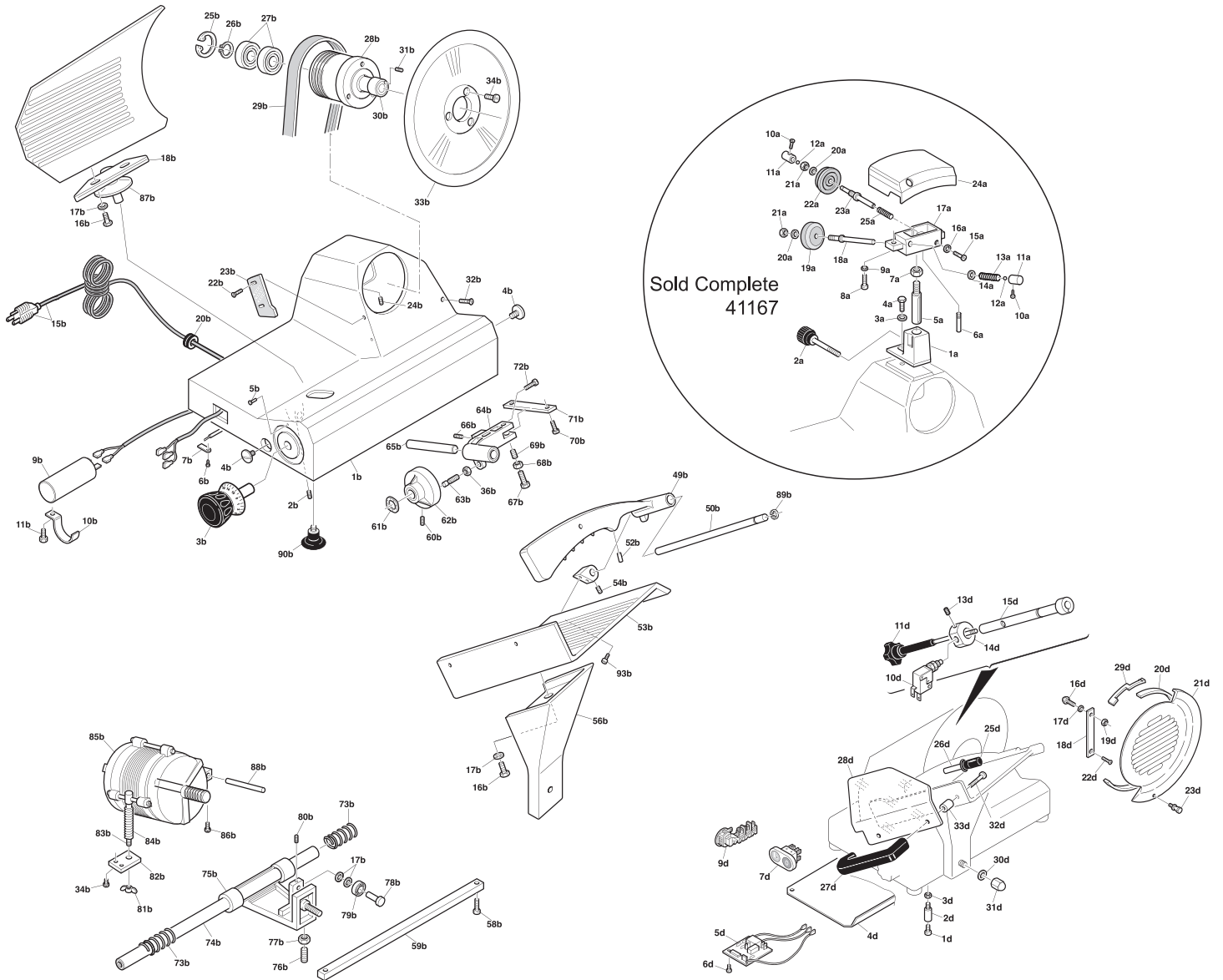


Parts Breakdown

Model MS-IT-0250-C 31343



Parts Breakdown

Model MS-IT-0250-C 31343

| Item No. | Description | Position | Item No. | Description | Position | Item No. | Description | Position |
|----------|-------------------------------------|----------|----------|----------------------------------|----------|----------|--|----------|
| 33968 | Sharpener Base for 31343 | A1 | 15098 | Deflector Screw for 31343 | B22 | 15133 | Plate for 31343 | B71 |
| 33969 | Thumb Screw for Sharpener for 31343 | A2 | 17687 | Slice Deflector for 31343 | B23 | 15134 | Screw TC for 31343 | B72 |
| 33970 | Washer for 31343 | A3 | 15099 | Screw for 31343 | B24 | 15135 | Slide Bar Spring for 31343 | B73 |
| 33971 | Screw for 31343 | A4 | 33953 | Circlip for 31343 | B25 | 15136 | Slide Bar for 31343 | B74 |
| 33972 | Sharpener Shaft for 31343 | A5 | 33954 | Circlip for 31343 | B26 | 15137 | Carriage for 31343 | B75 |
| 33973 | Screw for 31343 | A6 | 33955 | Pulley Bearing for 31343 | B27 | 33966 | Carriage Screw for 31343 | B76 |
| 33974 | Nut for 31343 | A7 | 33956 | Pulley for 31343 | B28 | 15140 | Carriage Nut for 31343 | B77 |
| 33975 | Screw for 31343 | A8 | 15100 | Belt TB2310 1/8 8 Ribs for 31343 | B29 | 15141 | Pin for 31343 | B78 |
| 33976 | Washer for 31343 | A9 | 33957 | Shaft for 31343 | B30 | 15142 | Bearing for 31343 | B79 |
| 33977 | Screw for 31343 | A10 | 33958 | Screw for 31343 | B31 | 15143 | Screw for 31343 | B80 |
| 33978 | Push Knob for Sharpener for 31343 | A11 | 15101 | Screw TC for 31343 | B32 | 15144 | Wing Nut for 31343 | B81 |
| 33979 | Ball Bearing for 31343 | A12 | 13586 | Blade 40-3-210 for 31343 | B33 | 15145 | Plate for 31343 | B82 |
| 33980 | Spring for 31343 | A13 | 15103 | Screw for 31343 | B34 | 15146 | Motor Adjustment Bar for 31343 | B83 |
| 33981 | Washer for 31343 | A14 | 15105 | Nut for 31343 | B36 | 15147 | Spring for Adjustment Bar for 31343 | B84 |
| 33982 | Screw for 31343 | A15 | 15106 | Pin for 31343 | B39 | 15148 | Motor for 31343 | B85 |
| 33983 | Washer for 31343 | A16 | 15107 | Pin for 31343 | B40 | 15149 | Screw for 31343 | B86 |
| 33984 | Sharpener Housing for 31343 | A17 | 15108 | Support for 31343 | B41 | 15150 | Ventosa for 31343 | B87 |
| 33985 | Grinding Shaft for 31343 | A18 | 15109 | Spring for 31343 | B42 | 15151 | Motor Pin for 31343 | B88 |
| 33914 | G Stone 40x08x06 for 31343 | A19 | 15110 | Spring for 31343 | B43 | 15152 | Circlip for 31343 | B89 |
| 33987 | Washer for 31343 | A20 | 15111 | SM Push Button for 31343 | B44 | 14933 | Foot for 31343 | B90 |
| 33988 | Nut for 31343 | A21 | 15112 | Screw for 31343 | B45 | 15154 | Pulley Assembly for 31343 | B93 |
| 17212 | F Stone 45x08x06 for 31343 | A22 | 15114 | Meat Grip for 31343 | B49 | 64791 | Screw for 31343 | D1 |
| 33990 | Honing Shaft for 31343 | A23 | 15115 | Pin for 31343 | B50 | 64792 | Spacer for 31343 | D2 |
| 33991 | Sharpener Cover for 31343 | A24 | 15117 | Lock for 31343 | B52 | 64793 | Nut for 31343 | D3 |
| 33992 | Spring for 31343 | A25 | 15118 | Meat Plate for 31343 | B53 | 25162 | Bottom Cover for 31343 | D4 |
| 15082 | Casing for 31343 | B1 | 15119 | Screw for 31343 | B54 | 64794 | Circuit Board for 31343 | D5 |
| 15083 | Screw for 31343 | B2 | AG040 | Aluminum Arm.X AFF. for 31343 | B56 | 64795 | Screw for 31343 | D6 |
| 14940 | Index Knob for 31343 | B3 | AG041 | Bushing BP for 31343 | B56 | 64796 | On/Off Switch for 31343 | D7 |
| 33951 | Screw for 31343 | B4 | 15122 | Screw for Support Bar for 31343 | B58 | 64797 | Terminal Block for 31343 | D9 |
| 15085 | Rivet for 31343 | B5 | 15123 | Support Bar for 31343 | B59 | 18933 | Micro Switch for 31343 | D10 |
| 15086 | Screw for 31343 | B6 | 15124 | Screw for 31343 | B60 | 33993 | Tie Rod for 31343 | D11 |
| 15087 | Plate for 31343 | B7 | 15125 | Washer for 31343 | B61 | 33994 | Screw for 31343 | D13 |
| 15088 | Capacitor 12.5UF 370-470V for 31343 | B9 | 15126 | Cam for 31343 | B62 | 25163 | Tie Rod Ring for 31343 | D14 |
| 15089 | Clamp for 31343 | B10 | 15127 | Cam Screw for 31343 | B63 | 33996 | Pivot Chuck for 31343 | D15 |
| 15090 | Screw TC for 31343 | B11 | 15019 | Slide Support for 31343 | B64 | 64798 | Screw for 31343 | D16 |
| 14859 | Power Cord for 31343 | B15 | 33965 | Slide Pin for 31343 | B65 | 64799 | Washer for 31343 | D17 |
| 15092 | Screw TE for 31343 | B16 | 15128 | Screw TC for 31343 | B66 | 64800 | Support Ring for 31343 | D18 |
| 15093 | Washer for 31343 | B17 | 15129 | Screw TC for 31343 | B67 | 64801 | Nut for 31343 | D19 |
| 15094 | Support for 31343 | B18 | 15130 | Nut for 31343 | B68 | 64802 | Ring for 31343 | D20 |
| 15095 | Thickness Adj. Plate for 31343 | B19 | 15131 | Screw Testa CACC for 31343 | B69 | 14828 | Blade Shield for 31343 | D21 |
| 15096 | Strain Relief for 31343 | B20 | 15132 | Screw for 31343 | B70 | 41167 | Complete Sharpening Assembly for 31343 | |